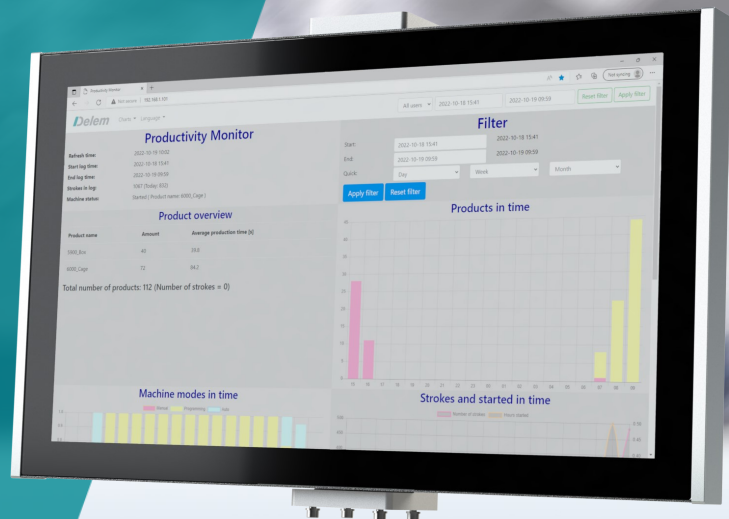


EXPANDING POSSIBILITIES

DD-60S

Second display solution for DA-60S
series CNC press brake controls



The DD-60S 2nd display for the DA-60S press brake control expands the solution with the ability to integrate additional software applications as well as it can expand the control GUI.

Using ERP systems at the machine, enables the operator to see production plans, know his activity schedule and also update activities directly in the system. Next to reference lookup in e.g. PDF or even CAD/CAM systems, understanding details on the job at hand, make efficiency increase. No separate workstations near the machine and no last minute calls to preparation in order to have all set for the main task, produce the part.

State-of-art function complete

The DD-60S 2nd display is a full functional 1920 x 1200 touchscreen solution which can be connected to both PC (connected to the company LAN) as to the DA-60S press brake control. The 2 separate HDMI interfaces ensure easy and reliable connection, as also the accompanying USB interfaces ensure that the keyboard, mouse, touchscreen and memory connection are reliably at hand.

Neat functionality is provided with the automatically switching function over the DA-60S user interface. If installed and applicable, the DD-60S can be switched from PC to control and vice versa. The USB ports connecting the keyboard, mouse and touchscreen, will be automatically appointed the active function.

The monitor can also be used solely for the computer functionality at the machine.

DD-60S features:

- 24" high resolution colour TFT
- Industrial grade touch screen functionality
- 2x HDMI interface
- Proprietary switch function from CNC
- USB, peripheral interfacing, automatically switching
- 2x USB, switching with source
- 1x USB, direct

Delem

Everything under control

Part of KEBA group.

Specifications DD-60S

Product configuration

Standard

- Color LCD display
- 24" TFT, high brightness
- 1920 x 1080 pixels, 32 bit color
- Full touch PCT touch screen
- Hardened glass scratch proof surface

Ordering information

- DD-60S 2nd display for DA-60S



Technical specification

General

- Instant Shut Off
- DA-60S compatible

Electrical / interfacing

- Power supply: 24V
- HDMI (2x)
(PC workstation + CNC-control)
- USB-B device (hub) connect
- USB-A (2x), switched with source
(keyboard + mouse)
- USB-A (1x), direct connect
(storage device)

Control

- Switch control, Delem proprietary,
integrated with DD-60S CNC control
- Touchscreen switch with source

Mechanical

- Housing 670x366x80mm
- Design, glass surface, aluminium edge
- IP54
- Weight approx. 11.5 kg (incl. housing)

Miscellaneous

- Bracket for mounting above DA-60S controls included
- Software option for future DA-60S external content functionality included (OP-W-EXTDISP)
- Optional rear mounting with VESA adapter

